

## ALPHABET QUICK SHIP LEAD-TIMES

### 5 Business Days

DIM10 (eldoLED 1%) or ELV dimming  
1-50 UNITS  
51-100 CONSULT FACTORY

### 10 Business Days

DIM10 (eldoLED 1%) or ELV dimming  
51-250 UNITS  
251-500 CONSULT FACTORY

### 21 Business Days

LUDA (LUTRON)  
1-100 UNITS

**Ship Dates and Scheduling:** Business days are Monday-Friday and do not include weekend or holidays. All ship dates are estimated and are determined per the following examples

- If order is received before 11:00am PST on Monday for a 5-day item, the ESD will be the following Monday.
- Order received after 11:00am for a 5-day item will receive an ESD based on the following business day.

#### Other Shipping Scenarios:

- If order is received with both standard and QS line items, the QS items will be processed on a separate Sale Order with -QS after PO number provided.
- If items ordered are intended to ship together, please note "SHIP COMPLETE". Items will ship based on longest lead time.
- Partial shipment may be required based on current factory loads.
- Ceiling plate rough-ins can be shipped ahead of LED modular units with possible freight adder (consult factory for terms).

Consult factory for options or quantities not shown.

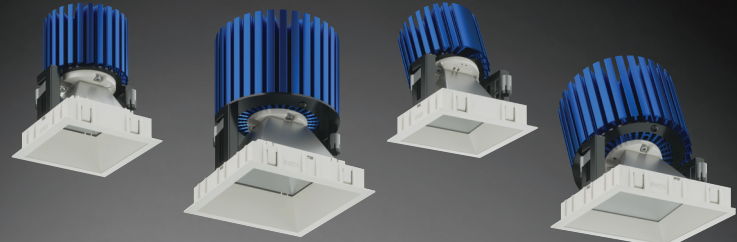
## NU SERIES 3" AND 4" - ROUND



### ORDERING CODE EXAMPLE: NU3 - RD - XTM19 - 13LM - 35K - 83 - HE40 - 120 - DIM10 - NC - WH - WH - QS

<b>SERIES</b>	<b>NU3</b>	3"
	<b>NU4</b>	4"
<b>TYPE</b>	<b>RD</b>	round downlight
	<b>RDT</b>	round downlight trimless
	<b>RW</b>	round wall wash
	<b>RWT</b>	round wall wash trimless
<b>LED</b>	<b>XTM19</b>	XTM19
<b>LUMEN</b>	<b>13LM</b>	See spec sheet for delivered lumens
	<b>20LM</b>	
<b>CCT</b>	<b>30K</b>	3000K
	<b>35K</b>	3500K
<b>CRI</b>	<b>83</b>	83 CRI
<b>REFLECTORS</b>	<b>HE40</b>	40° high efficiency diffused lens (NU4 ONLY)
	<b>HE45</b>	45° high efficiency diffused lens (NU3 ONLY)
	<b>WW</b>	wall wash
<b>VOLTAGE</b>	<b>120</b>	120V
	<b>277</b>	277V
<b>DIMMING</b>	<b>DIM10</b>	standard driver with flicker free 0-10V dimming to 1%
	<b>LUDA</b>	lutron ecosystem dimming to 1%
	<b>ELV</b>	leading & trailing edge dimming (Triac/ELV) (120V and 13LM ONLY)
<b>MOUNTING</b>	<b>NC</b>	new construction with ceiling fitting plate
	<b>RET</b>	retrofit, no ceiling fitting plate
<b>TRIM COLOR</b>	<b>WH</b>	white
<b>BEZEL COLOR</b>	<b>WH</b>	white
<b>QUICK SHIP</b>	<b>QS</b>	quick ship

## NU SERIES 3" AND 4" - SQUARE



### ORDERING CODE EXAMPLE: NU3 - QD - XTM19 - 13LM - 35K - 83 - HE60 - 120 - DIM10 - NC - WH - WH - QS

<b>SERIES</b>	<b>NU3</b>	3"
	<b>NU4</b>	4"
<b>TYPE</b>	<b>QD</b>	square downlight
	<b>QDT</b>	square downlight trimless
	<b>QW</b>	square wall wash
	<b>QWT</b>	square wall wash trimless
<b>LED</b>	<b>XTM19</b>	XTM19
<b>LUMEN</b>	<b>13LM</b>	See spec sheet for delivered lumens
	<b>20LM</b>	
<b>CCT</b>	<b>30K</b>	3000K
	<b>35K</b>	3500K
<b>CRI</b>	<b>83</b>	83 CRI
<b>REFLECTORS</b>	<b>HE60</b>	60° high efficiency diffused lens
	<b>WW</b>	wall wash
<b>VOLTAGE</b>	<b>120</b>	120V
	<b>277</b>	277V
<b>DIMMING</b>	<b>DIM10</b>	standard driver with flicker free 0-10V dimming to 1%
	<b>LUDA</b>	lutron ecosystem dimming to 1%
	<b>ELV</b>	leading & trailing edge dimming (Triac/ELV) (120V and 13LM ONLY)
<b>MOUNTING</b>	<b>NC</b>	new construction with ceiling fitting plate
	<b>RET</b>	retrofit, no ceiling fitting plate
<b>TRIM COLOR</b>	<b>WH</b>	white
<b>BEZEL COLOR</b>	<b>WH</b>	white
<b>QUICK SHIP</b>	<b>QS</b>	quick ship